

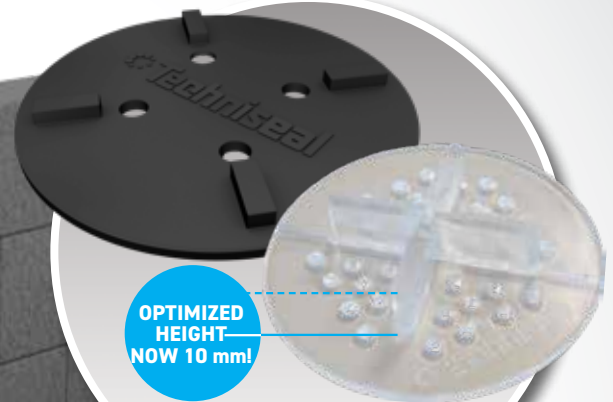


# INSTALL WITH CONFIDENCE

## Paver Installation Accessories



**Adhesives**



**Hardscape Spacers**



**EZ Base Panels**



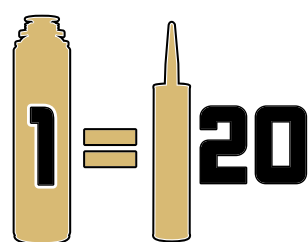
**Paver Edging**



# STRUCTURE BOND™

FOAM ADHESIVE • ADHÉSIF EN MOUSSE

- Super-strength hardscape foam adhesive
- Developed for the construction industry
- Precise delivery - No mess, no waste
- Adjustable bead size
- Works on wet and cold surfaces
- High-yield content



\*Set time will vary according to air moisture



## SUPER QUICK AND EASY APPLICATION

Structure Bond™ is an innovative super-strength foam adhesive that bonds a wide range of construction materials such as concrete, stone, brick, wood, metal, as well as composite materials.

Made from high-quality modified polyurethanes, it's adhesive strength is unmatched among all types of polyurethane adhesives.

Application time is up to 50% faster than with conventional tube adhesives. Materials are bond in just 8 minutes, and the adhesive fully cures within 24 hours.

Structure Bond™ Gun allows for a precise adhesive delivery with a single pull of the trigger that stops as soon as you let go. It requires no pumping, cutting or puncturing of cartridge nozzles. Gun is easily cleaned with practical cleaner cartridge available from Techniseal®.

One container of Structure Bond™ is equal to twenty 10 oz tubes of standard adhesive and yields an amazing 183 m (600-foot) with a 9,5 mm (3/8") bead.



### Specifications:

Volume: 700ml (22.5 fl.oz.) - Weight: 680g (24 oz)  
Set time (open time): <8 min. - Cure time: 24 hrs  
An updated technical data sheet can be found at [techniseal.com](http://techniseal.com)

### ALSO AVAILABLE:



### RG+ CONCRETE ADHESIVE

- Ultra-adherent on dry, wet or frozen surfaces
- Low-VOC formula
- Elastomeric resin-based compound - remains flexible
- Ideal for the construction of retaining walls



### STRUCTURE BOND™ GUN CLEANER

- Specifically designed to fit Structure Bond™ Gun.
- Makes the removal of foam adhesive spillage on any solvent-resistant surface easier than ever before.
- A powerful and innovative cleaning solution to get rid of non-cured foam adhesive.

## EZ Base® PANEL BASE SYSTEM

### SAVE TIME, LABOR AND MONEY

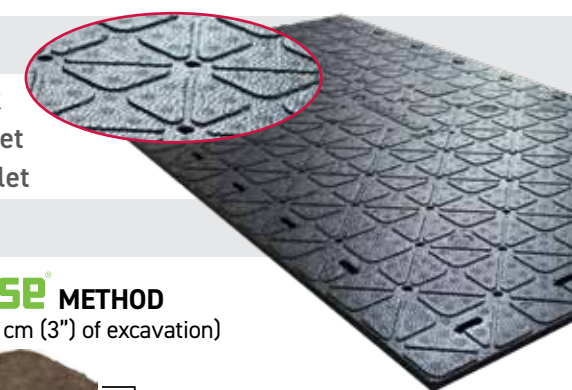
Imagine a patio that installs with less work, less expense and with no special tools or materials.

EZ Base® panel system allows installers to easily build a patio or walkway with a stable base that resists movement even in the most extreme freeze/thaw climates.

EASY TO CUT • OPTIMAL DRAINAGE HOLES & CANALS • STABLE OVERLAP EDGE

### Specifications :

- 51,75 cm x 91,4 cm x 17 mm (20" x 36" x 0.67")
- 48 m² (5.15 sq. ft)
- 450 g (1 lb) per panel
- PPE Grade foam
- 10 units per pack
- 12 packs per pallet
- 120 units per pallet



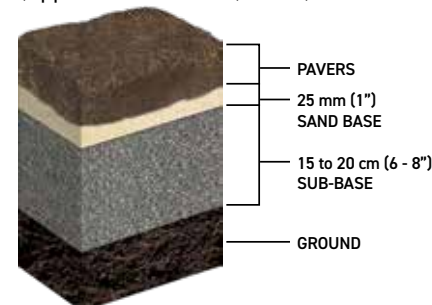
**FAST**  
saves up to 20 cm (8") of excavation

**EASY**  
each panel replaces up to 115 kg (250 lbs) of base aggregates

**DURABLE**  
will not degrade in the ground

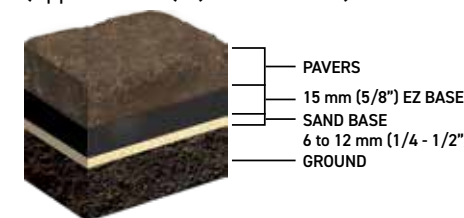
### TRADITIONAL METHOD

(Approx. 23 to 28 cm (9 - 11") of excavation)



### EZ Base® METHOD

(Approx. 7 cm (3") of excavation)

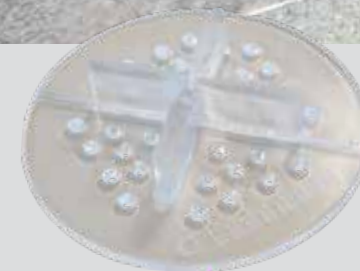


EZ Base® provides superior stability to hardscape installations while reducing the required excavation. These easy to install high-density foam panels replace the need for a traditional compacted aggregate layer base system.



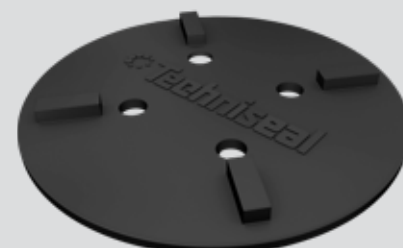
## HARDSCAPE SPACERS

Techniseal's plastic or rubber spacers for exterior hardscape are made of high-quality materials and built to sustain the weight of the vast majority of pavers, slabs and tiles available on the market.



### PLASTIC SPACERS

- 10 mm height ensures a deep, stable corner joint filled with more jointing material
- Guarantees even spaces between tiles
- Saves time & effort on installation
- 6,25 cm (2.5") diameter
- Spacing width: 4 mm (5/32")
- Ideal for use over EZ Base® foam panels



### RUBBER SPACERS

- Noise reduction properties
- Provides added stability
- Guarantees even spaces between tiles
- Saves time & effort on installation
- 7,62 cm (3") diameter
- Spacing width: 4,8 mm (3/16")

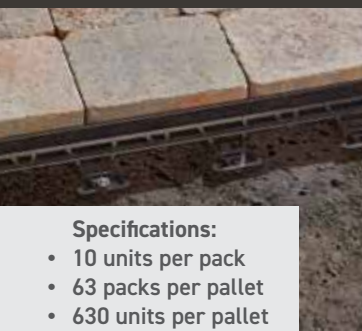
**NOW 10 mm!**

**OPTIMIZED HEIGHT**





# PAVER EDGING



## Specifications:

- 10 units per pack
- 63 packs per pallet
- 630 units per pallet

## CUT on THE GO Design System

Techniseal's **2,4 m (8') RIGID PAVER EDGING**: "Lobster Tail" design allows installer to double-spike, eliminating any risk of frost lift. It is also handy for spike off-set, in case of obstruction below grade.

- Easy snap connection
- Can easily be cut on the ground
- Convenient and easy to use
- Heavy duty injection molded
- Made from 100% recycled material



## Specifications:

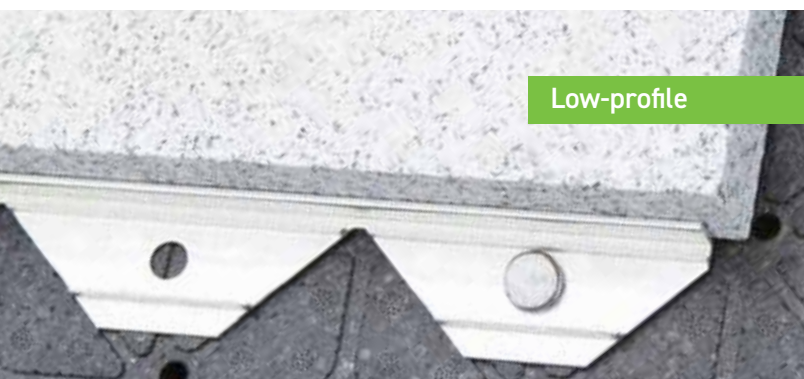
- 6 coils per box
- 12 boxes per pallet
- 72 coils per pallet

Techniseal's **12 m (40') COIL PAVER EDGING**: the ultimate product for stylish, modern edges. It is engineered to provide excellent support for concrete or brick pavers in patio, walkway, or driveway applications. This heavy-duty edging is available with a low or high profile. It has a unique flexible durability that lets it make aggressive curves and straight sections with ease.

- Flexible and durable
- Makes it easy to create aggressive curves
- Compact coil offers 12 m (40') of edging in a small package
- No more messy broken bundles
- Made from 100% recycled material
- Easy transport, storage and handling

Quick and easy to install, Techniseal's **2,4 m (8') LOW-PROFILE ALUMINIUM** edging allows for durable hardscape installations that blend seamlessly into any commercial or residential landscaping plan. The discreet Low-Profile Aluminium Edging helps prevent pavers or other hardscape materials from shifting or moving.

Made from high-grade aluminium, this edging won't deteriorate from exposure to the sun, frost, and other adverse weather conditions. Very flexible, it can be installed in a straight line or bent into any curve without cutting.



Low-profile



Easy to bend by hand



Resists rust

- Discreet - A low profile design that conceals the edging for a crisp installation.
- Weather-resistant - Won't deteriorate from exposure to the sun, frost, etc.
- Flexible - Easy to bend into any curve or create 90° angles without cutting.
- Perfect for driveways, patios, walkways, and other hardscape installations
- Versatile - Ideal for the installation of pavers, flagstones, bluestones, granite, porcelain pavers and more.
- Each section is 8' 4" long and 5/8" tall.
- Made of 6063 aluminum alloy with T-5 hardness.



For maximum strength at all times, use Techniseal's Paver Edging Nails

- Heavy-duty 25,4 cm (10") nails
- Perfect for use with Techniseal hardscape edgings



## Specifications:

- 30 tracks per box
- 20 boxes per skid
- 70973071

Contact your local Techniseal® representative, visit [techniseal.com](http://techniseal.com) or dial 1 800 465-7325 for more details.

