

PAVER EDGING



- Specifications:**
- 10 units per pack
 - 63 packs per pallet
 - 630 units per pallet

CUT on THE GO Design System

Techniseal's **8' (2,4 m) PAVER EDGING:** "Lobster Tail" design allows installer to double-spike, eliminating any risk of frost lift. It is also handy for spike off-set, in case of obstruction below grade.

- Easy snap connection
- Can easily be cut on the ground
- Convenient and easy to use
- Heavy duty injection molded
- Made from 100% recycled material
- 1 5/8" high



- Specifications:**
- 6 coils per box
 - 12 boxes per pallet
 - 72 coils per pallet

Techniseal's **40' (12 m) COIL PAVER EDGING:** the ultimate product for stylish, modern edges. It is engineered to provide excellent support for concrete or brick pavers in patio, walkway, or driveway applications. It has a unique flexible durability that lets it make aggressive curves and straight sections with ease.

- Flexible and durable
- Makes it easy to create aggressive curves
- Compact coil offers 40' (12 m) of edging in a small package
- No more messy broken bundles
- Made from 100% recycled material
- Easy transport, storage and handling

Quick and easy to install, Techniseal's **8'4" (2,54 m) LOW-PROFILE ALUMINIUM** edging allows for durable hardscape installations that blend seamlessly into any commercial or residential landscaping plan. The discreet Low-Profile Aluminium Edging helps prevent pavers or other hardscape materials from shifting or moving.

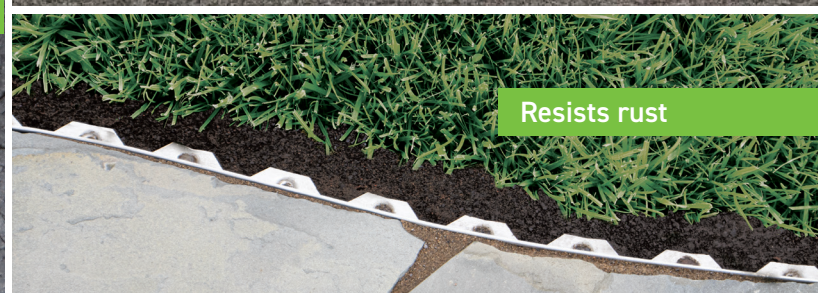
Made from high-grade aluminium, this edging won't deteriorate from exposure to the sun, frost, and other adverse weather conditions. Very flexible, it can be installed in a straight line or bent into any curve without cutting.



Easy to bend by hand



Low-profile



Resists rust

- Discreet - A low profile design that conceals the edging for a crisp installation.
- Weather-resistant - Won't deteriorate from exposure to the sun, frost, etc.
- Flexible - Easy to bend into any curve or create 90° angles without cutting.
- Perfect for driveways, patios, walkways, and other hardscape installations
- Versatile - Ideal for the installation of pavers, flagstones, bluestones, granite, porcelain pavers and more.
- Each section is 8' 4" long and 5/8" tall.
- Made of 6063 aluminum alloy with T-5 hardness.



- Specifications:**
- 30 tracks per box
 - 20 boxes per skid



For maximum strength at all times, use Techniseal's Paver Edging Nails

- Heavy-duty 10" (25,4 cm) nails
- Perfect for use with Techniseal hardscape edgings

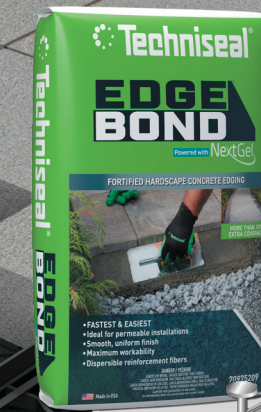
Techniseal®

INSTALL WITH CONFIDENCE PAVER INSTALLATION ACCESSORIES

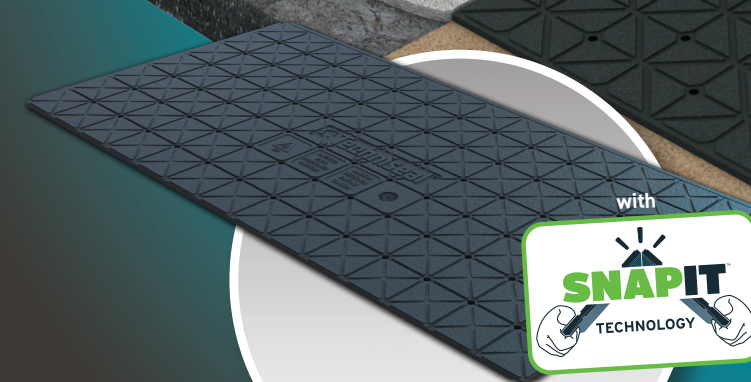


OPTIMIZED HEIGHT
0.39"

Hardscape Spacers



Paver Edging



NEXTBASE™ Panels



Contact your local Techniseal® representative, visit techniseal.com or dial 800 465-7325 for more details.



34-1562 (02/26)



NEXTBASE

Panel Base System

Eliminate deep, time-consuming excavations

Imagine a patio or a walkway that installs with less work, less expense and with no special tools or materials.

NextBase™ is the new generation of high-density panel base system that replaces traditional compacted aggregate-base installations. It provides great stability to hardscape installations while reducing the required excavation. NextBase™ panels are easy to cut and feature drainage holes, slopes and channels for water control and an interlocking system for added stability.

Save time, labor and money.



REPLACES UP TO 300 lb • INTERLOCKING SYSTEM • CAN BE ROTATED TO 90° • INTEGRATED CUTTING MARKS

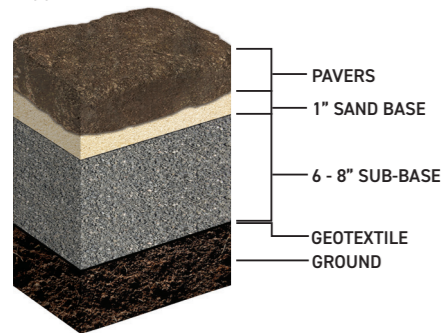
Specifications:

- 21 3/4" x 42 3/4" x 3/4"
- 6.125 sq. ft
- 1.26 lb per panel
- Expanded Polypropylene (EPP) Foam

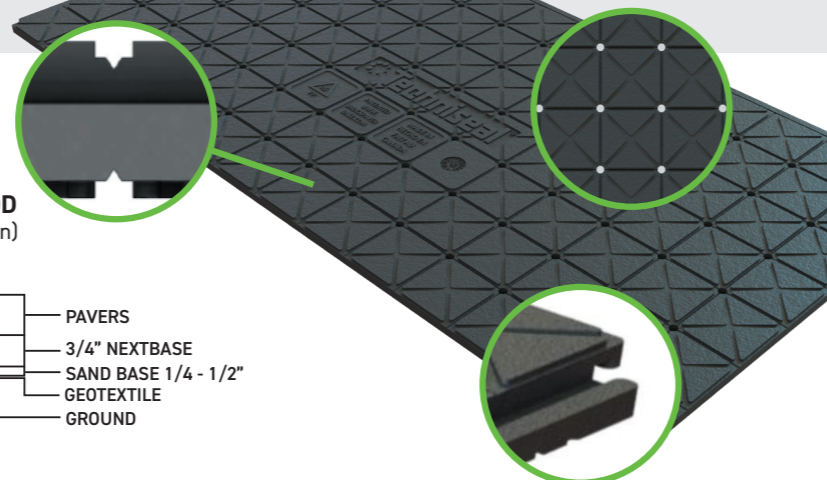
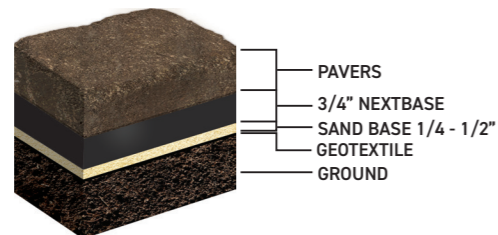
- 10 units per pack
- 12 packs per pallet
- 120 units per pallet



TRADITIONAL METHOD (Approx. 9 to 11" of excavation)



NEXTBASE™ METHOD (Approx. 3" of excavation)



EDGE BOND

Powered with NextGel



NEXTGEL™ FORTIFIED HARDSCAPE CONCRETE EDGING

EDGE BOND™, with maximum workability, is the perfect alternative to plastic edging and spikes.

EDGE BOND™ is the perfect choice for:

- Traditional, open graded or permeable installations
- NEXTBASE™ foam panel installations
- Concrete overlay installations
- Concrete pavers, wet-cast pavers, clay pavers, natural stone, slabs, textured pavers
- Commercial, residential and public projects
- Pedestrian and vehicular use

- Ready-to-use - simply add water
- Paintable or sealable if used as decorative edging
- Freeze and thaw resistant
- Alternative to plastic edging and spikes
- Additional strength and stability (when compared to traditional plastic edging)

COVERAGE

16 to 20 linear feet per 50 lb bag (4.9 to 6.1 linear meters per 22.7 kg bag).
The amount required will depend on the shape and size of the edging.

NextGel™ is a revolutionary technology that radically transforms and improves the properties and behavior of jointing products and additives.

HARDSCAPE SPACERS

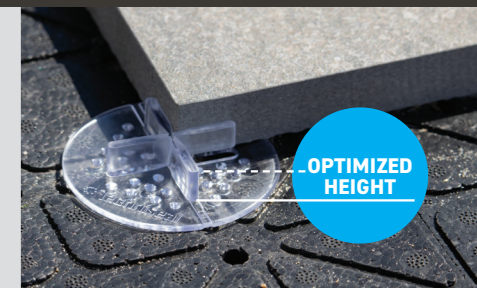
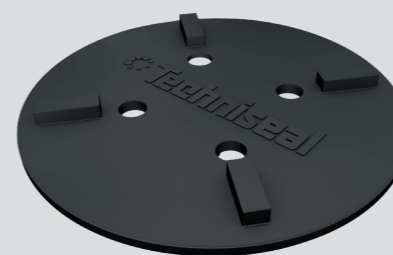
Techniseal's plastic or rubber spacers for exterior hardscape are made of high-quality materials and built to sustain the weight of the vast majority of pavers, slabs and tiles available on the market.

PLASTIC SPACERS

- 0.39" height ensures a deep, stable corner joint filled with more jointing material
- Guarantees even spaces between tiles
- Saves time & effort on installation
- 2.5" diameter
- Spacing width: 5/32"
- Ideal for use over NEXTBASE™ foam panels

RUBBER SPACERS

- Noise reduction properties
- Provides added stability
- Guarantees even spaces between tiles
- Saves time & effort on installation
- 3" diameter
- Spacing width: 3/16"



Ideal for paver, porcelain tile and natural stone installations

