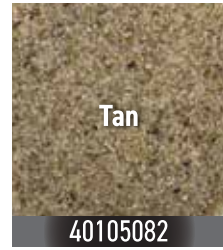
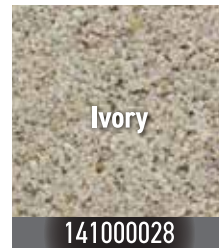
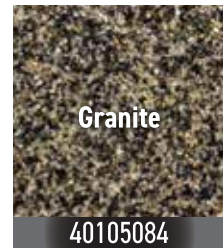
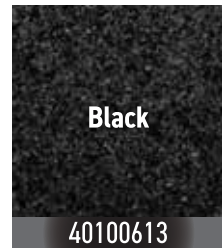
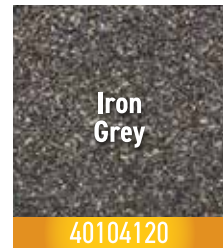
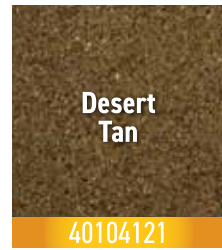
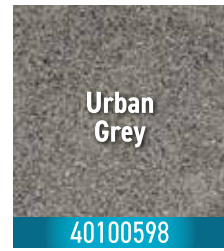
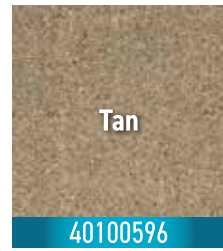
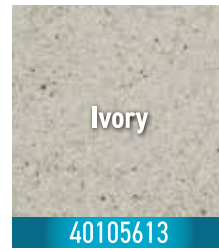
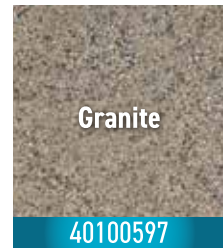
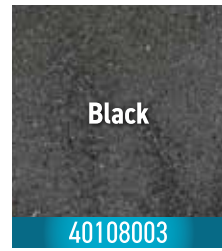
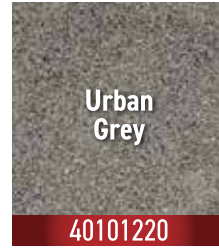
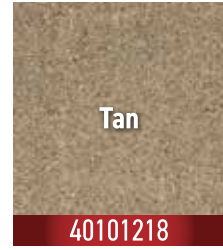
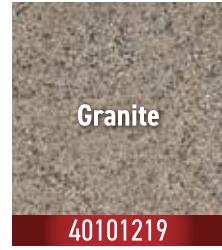
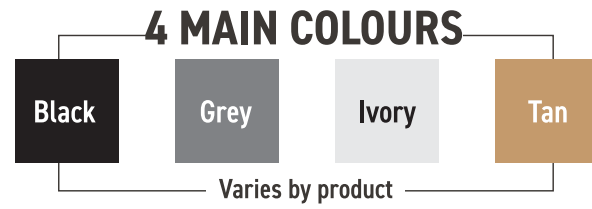




JOINTING PRODUCTS

THE PERFECT COLOUR FOR YOUR PROJECT



Shades of color may vary by region for all our jointing products. Ask about the specific colours available in your area. Shipping fee may apply.



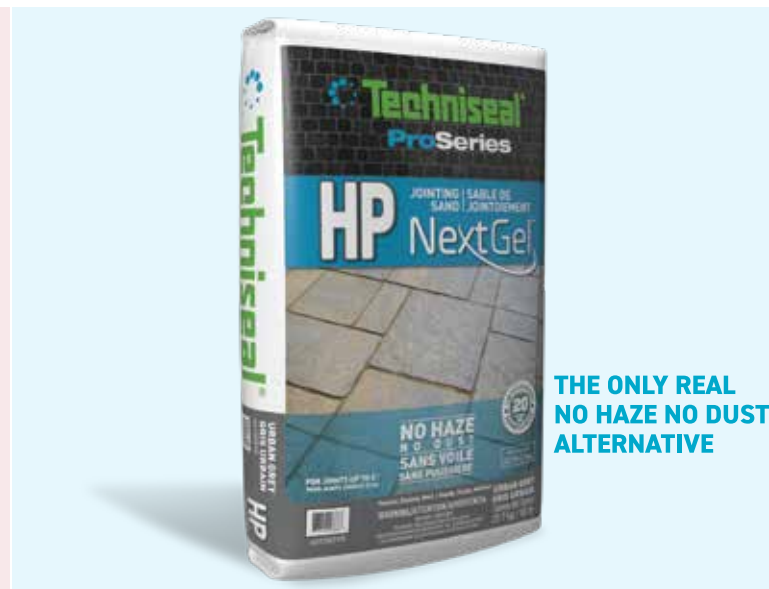
341-463 (03/2026)



IT ALL STARTS WITH THE RIGHT JOINTING PRODUCT



THE SMART CHOICE FOR YOUR EVERYDAY INSTALLATIONS



THE ONLY REAL NO HAZE NO DUST ALTERNATIVE



HIGH-PERFORMANCE JOINTING SAND VALUED BY TOP INSTALLERS



THE FIRST POLYMERIC JOINTING PRODUCT SPECIFICALLY DEVELOPED FOR FLAGSTONES



A JOINTING COMPOUND THAT WORKS UNDER WET OR DRY WEATHER CONDITIONS

Ideal for residential projects

For residential, commercial, industrial and public projects where mechanical compaction is possible and/or mandatory

For residential, commercial, industrial and public projects where mechanical compaction is either not possible or traditionally not used

For installations carried out on draining base, with NextBase™, cement/sand bedding. A porous draining base is required for proper installation

Designed for optimal jointing of interlocking pavers

Ideal for concrete, wet-cast, textured or clay pavers

Ideal for flagstone, concrete and wet-cast pavers such as imitation CobbleStone, highly textured surfaces large slabs and porcelain pavers (where joints are 5 cm (1/4") or larger)

Ideal for natural stone, concrete pavers, wet-cast pavers, clay pavers, large slabs and porcelain pavers

For false joints

For false joints

Save unused material for the next job site!

Ideal for joints from 1.6 mm to 13 mm (1/16" - 1/2") with intersecting spaces up to 2,5 cm (1")

Ideal for joints from 1.6 mm to 2.5 cm (1/16"-1") with intersecting spaces up to 5 cm (2")

Ideal for joints from 6 mm to 5 cm (1/4"-2") with intersecting spaces up to 10 cm (4")

Ideal for joints from 3 mm to 5 cm (1/8"-2") with intersecting spaces up to 10 cm (4")

For pedestrian and low-traffic areas such as driveways, walkways, patios, etc.

For high-humidity areas, with heavy or no slope and high-traffic areas

The true alternative to mortar, stone dust and polymeric stone dust

For walkways, pool decks, patios and light-duty residential driveways (up to 3 tons loading)

2 main colours: Grey and Tan (colours may vary by region)

4 main colours: Black, Grey, Ivory and Tan (colours may vary by region)

2 main colours: Tan and Grey (colours may vary by region)

Available colours: Black, Granite, Ivory and Tan