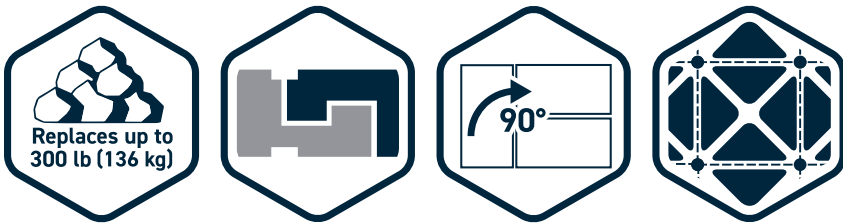


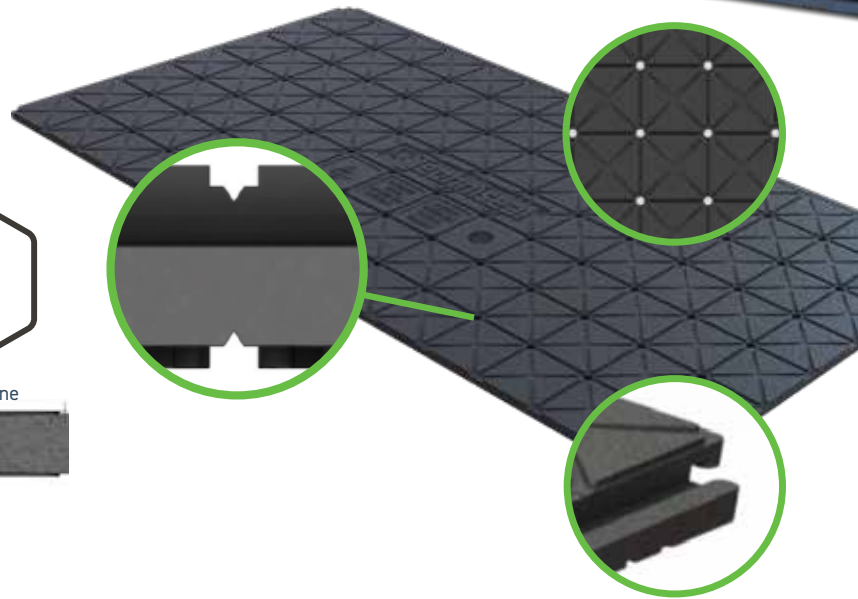
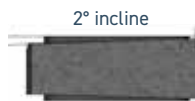
## NEXTBASE™ PANEL BASE SYSTEM



- Replaces up to 300 lb (136 kg) of base aggregates
- Interlocking system
- Panels can be rotated at a 90° angle
- Integrated cutting marks every 3'' (7,6 cm)



- Easy & fast to install
- Saves up to 8 inches of excavation
- Durable - will not degrade in the ground
- Improved water drainage capacity



## SAVE TIME, LABOR AND MONEY

IDEAL FOR PAVER, PORCELAIN TILE AND NATURAL STONE INSTALLATIONS



# NEXTBASE™

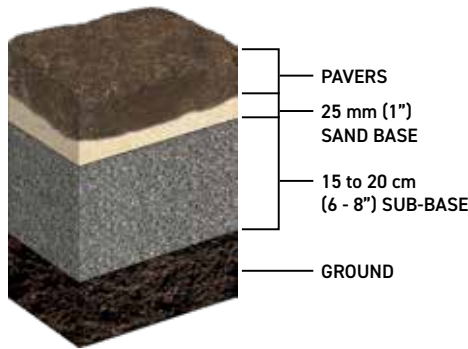


## ELIMINATE DEEP, TIME-CONSUMING EXCAVATIONS

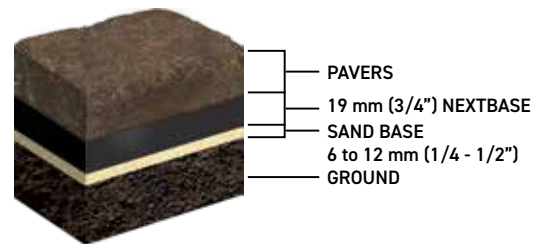
Imagine a patio or a walkway that installs with less work, less expense and with no special tools or materials.

NextBase™ is the new generation of high-density panel base system that replaces traditional compacted aggregate-base installations. It provides great stability to hardscape installations while reducing the required excavation. NextBase™ panels are easy to cut and feature drainage holes, slopes and channels for water control and an interlocking system for added stability.

### TRADITIONAL METHOD (Approx. 23 to 28 cm (9 - 11") of excavation)



### NEXTBASE™ METHOD (Approx. 7 cm (3") of excavation)



## DIRECTIONS



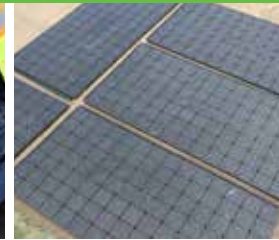
1. Determining the depth and area of total excavation and excavating.



2. Leveling and compacting the base.



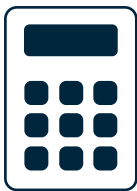
3. Laying geotextile.  
4. Adding bedding sand



5. Installing NextBase™ panels.



6. Installing pavers,  
7. edge restraints and  
8. jointing sand.



## How many do I need?

Sq. Ft. of Patio ÷ 6.125 = Number of Panels

Number of Panels ÷ 10 = Number of Packs

Please note that this value is approximative. Consider a slight surplus to compensate for the inevitable loss stemming from cutting panels.



Item #: 70971011 • Colour: Black

### Specifications:

- 55,25 cm X 108,59 cm X 19 mm (21 3/4" X 42 3/4" X 3/4")
- 572 g (1.26 lb) per panel
- 0.57 m<sup>2</sup> (6.125 sq. ft.)
- Expanded Polypropylene (EPP) Foam

- 10 units per pack
- 12 packs per pallet
- 120 units per pallet

341-438 (02/2026)

REPLACES UP TO 136 kg (300 lb) • INTERLOCKING SYSTEM • CAN BE ROTATED TO 90° • INTEGRATED CUTTING MARKS

Contact your local Techniseal® representative, visit [techniseal.com](http://techniseal.com) or dial 1 800 465-7325 for more details.

