

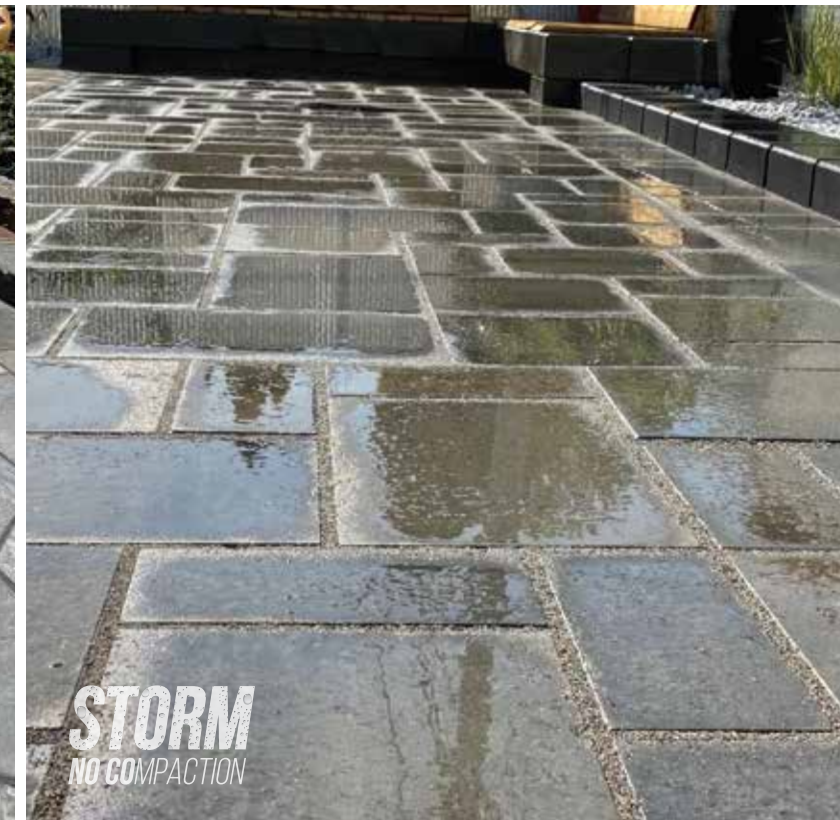


# POLYMERIC JOINTING PRODUCTS

## THE PERFECT COLOUR FOR YOUR PROJECT



Shades of color may vary by region for all our jointing products. Ask about the specific colors available in your area. Shipping fee may apply.



341-463\_03/24



## IT ALL STARTS WITH THE RIGHT JOINTING PRODUCT



THE SMART CHOICE FOR YOUR EVERYDAY INSTALLATIONS

Ideal for residential projects

Designed for optimal jointing of interlocking pavers

Ideal for narrow joints from 1.6 mm to 13 mm (1/16" - 1/2") with intersecting spaces up to 2,5 cm (1")

For pedestrian and low-traffic areas such as driveways, walkways, patios, etc.

2 main colours: Grey and Tan (colors vary by region)



HIGH-PERFORMANCE JOINTING SAND VALUED BY TOP INSTALLERS

For residential, commercial, industrial and public projects where mechanical compaction is possible and/or mandatory

Ideal for concrete, wet-cast, textured or clay pavers and porcelain tiles (only if mechanical compaction is possible)

For false joints

Ideal for joints from 1.6 mm to 2.5 cm (1/16"-1") with intersecting spaces up to 5 cm (2")

For high-humidity areas, with heavy or no slope and high-traffic areas

4 main colours: Black, Grey, Ivory, and Tan (colors vary by region)



THE FIRST POLYMERIC JOINTING PRODUCT SPECIFICALLY DEVELOPED FOR FLAGSTONES

For residential, commercial, industrial and public projects where mechanical compaction is either not possible or traditionally not used

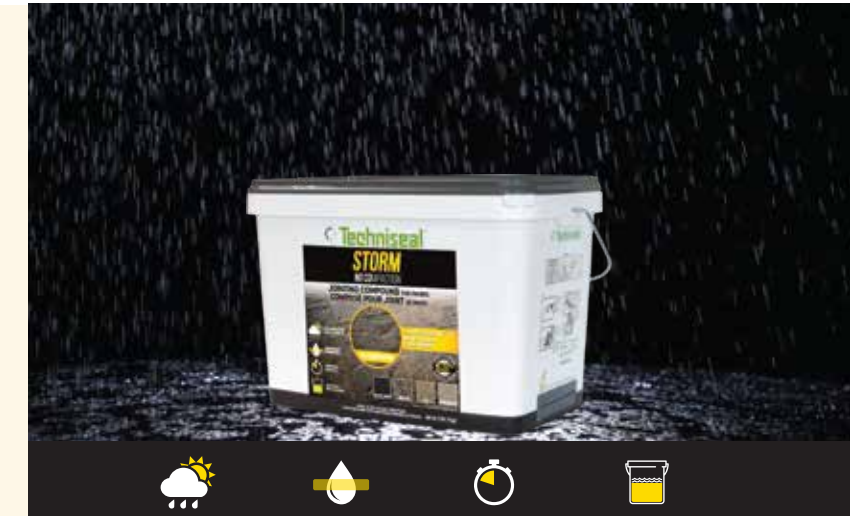
Ideal for flagstone, concrete and wet-cast pavers such as imitation CobbleStone, highly textured surfaces large slabs and porcelain pavers (where joints are 5 cm (1/4") or larger)

For false joints

Ideal for joints from 6 mm to 5 cm (1/4"-2") with intersecting spaces up to 10 cm (4")

The true alternative to mortar, stone dust and polymeric stone dust

2 main colours: Grey and Tan (colors vary by region)



A JOINTING COMPOUND THAT WORKS UNDER WET OR DRY WEATHER CONDITIONS

For installations carried out on draining base, with NextBase™, cement/sand bedding. A porous draining base is required for proper installation

Ideal for natural stone, concrete pavers, wet-cast pavers, clay pavers, large slabs and outdoor porcelain

Save unused material for the next job site!

Ideal for joints from 3 mm to 5 cm (1/8"-2") with intersecting spaces up to 10 cm (4")

Ideal for joints from 1/8" - 2" with intersecting spaces up to 4"

Available colours: Black, Granite, Ivory and Tan