



# Techniseal®

Protect and Beautify



## NEXTBASE™

### CASE STUDY

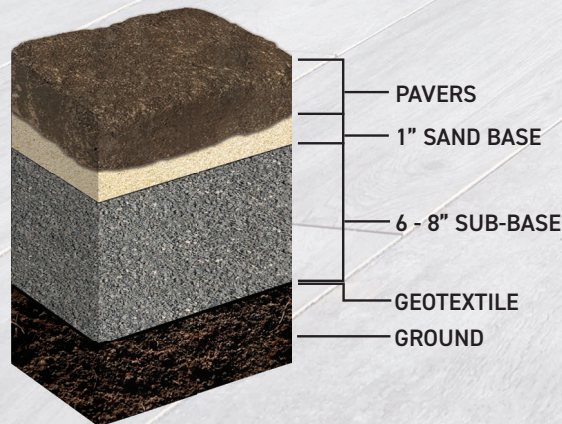


THE TOTAL HARDSCAPE SOLUTION

## Traditional Installation Method

STEPS	EQUIPMENT AND MATERIAL	COST BREAKDOWN	COST
Excavation	Rental of mini excavator 1.7 tons / loader (2 days)	1  x 8  x \$/h** + equipment	2,200 \$
Compaction of the ground	Rental of plate compactor	1  x 1  x \$/h* + equipment	135 \$
Disposal of unwanted material	Removal and disposal of the dirt and grass (loader)	(2 to 3 x 12 wheels) 1  x 3  x \$/h* + equipment	1,450 \$
Geotextile	Geotextile	500 sq ft x 0,20\$ / sq. ft. (covering overlap)	1,650 \$
Filling up the foundation	Raw materials (crushed stone 0-3/4 stones and sand)	25 tons of 0-3/4 crushed stone	
Compaction of the foundation	Machinery to install raw materials	Same equipment as for excavation and disposal	
Laying down the final bedding	Compacting every 6 inch (so 2 to 3 compactions needed)	1 ton of sand for final bedding	
Leveling	Laying, levelling and compacting bedding layer	1  x 10  x \$/h* + equipment	
Compaction of final bedding			
Installation of NEXTBASE	None to add		0 \$
Cost of NEXTBASE			
Installation of pavers	Laying down pavers	2  x 3  x \$/h* + equipment	450 \$
Repairs done on pathway to get to backyard (80 sq. ft)	Top soil + delivery Sod rolls (delivery charged with top soil)	1  x 4  x \$/h* + equipment	700 \$
<b>TOTAL COSTS</b>			<b>6,585 \$</b>
Job sold at 30 \$ per sq ft = 12 000 \$			<b>Total profits</b> <b>5,415 \$</b>

## TRADITIONAL METHOD (Approx. 9 to 11" of excavation)



### Legend:

\* 75\$/hour general labor rate

\*\* 100\$/hour loader operator labor rate

# methods for 20' x 20' patio

## NEXTBASE™ Installation Method

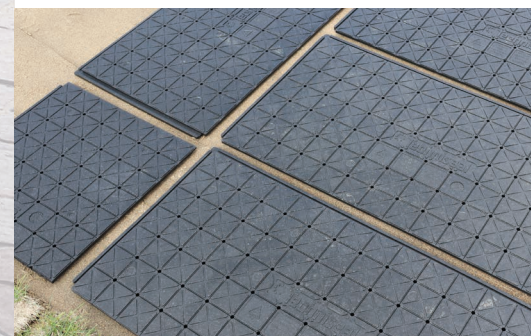
EQUIPMENT AND MATERIAL	COST BREAKDOWN	COST	\$ SAVINGS
Sod cutter		185 \$	-2015 \$
Rental of plate compactor	1  x 1  x \$/h* + equipment	135 \$	0 \$
Removal and disposal of dirt and grass (Wheelbarrow and shovel)	1  x 1  x \$/h* + equipment	475 \$	-975 \$
Raw materials (1/2 inch of sand) Using a rake to initially level the sand	400 sq ft x 0,20\$ / sq. ft. (covering overlap) 2 tons of regular sand 1 ton of sand for final bedding	385 \$	-1265 \$
No foundation needed	1  x 4  x \$/h* + equipment		
Product cost	1  x 0.5  x \$/h*	2,262 \$	2,262 \$
Laying down pavers	2  x 2.5  x \$/h* + equipment	375 \$	-75 \$
None		0 \$	-700 \$
<b>TOTAL COSTS</b>		<b>3,817 \$</b>	
<b>Total profits</b>		<b>8,183 \$</b>	<b>2,769 \$</b>

### NEXTBASE™ METHOD (Approx. 3" of excavation)



- PAVERS
- 3/4" NEXTBASE
- SAND BASE 1/4 - 1/2"
- GEOTEXTILE
- GROUND

APPROX.  
**1/3**  
**SAVINGS**



### ADDITIONAL INFORMATION

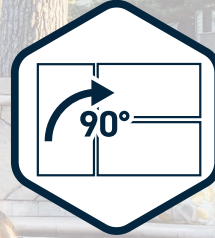
- \* We also need to keep in mind this important information: Contractor is able to step over the NEXTBASE panels, therefore not disturbing the compacted bedding layer.
- 25,00\$ per cubic yard - a 12 wheeler is around 16 cubic yards = 400,00\$ per 12 wheeler
- C.M.H.A. suggest an excavation of 12 inch for a sand foundation or 18 inches for a clay foundation
- Easier with NEXTBASE to slide the pavers in place over the surface.
- **You could save a complete day of work**



# NEXTBASE™



Replaces up to 300 lb (136 kg)



REPLACES UP TO 300 lb • INTERLOCKING SYSTEM • CAN BE ROTATED TO 90° • INTEGRATED CUTTING MARKS



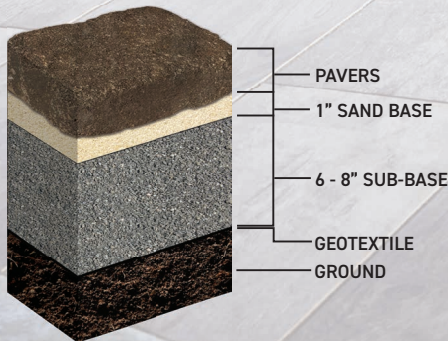
- Easy & fast to install
- Saves up to 8 inches of excavation
- Durable - will not degrade in the ground
- Improved water drainage capacity

## ELIMINATE DEEP, TIME-CONSUMING EXCAVATIONS

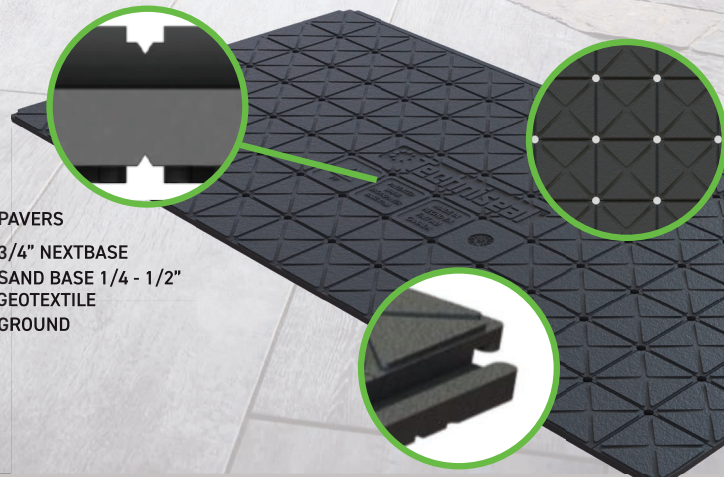
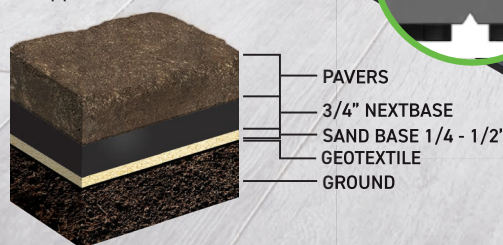
Imagine a patio or a walkway that installs with less work, less expense and with no special tools or materials.

**NextBase™** is the new generation of high-density panel base system that replaces traditional compacted aggregate-base installations. It provides great stability to hardscape installations while reducing the required excavation. NextBase panels are easy to cut and feature drainage holes, slopes and channels for water control and an interlocking system for added stability.

### TRADITIONAL METHOD (Approx. 9 to 11" of excavation)



### NEXTBASE™ METHOD (Approx. 3" of excavation)



## QUESTIONS?



If in doubt, do not hesitate to contact our certified technical support team, available **Monday to Thursday 8 am to 5 pm (EST)**, and **Friday 8 am to 4 pm (EST)**.

### TO CONTACT OUR TEAM :

- **Call:** 1 800 465-7325
- **Email:** [service@techniseal.com](mailto:service@techniseal.com)
- Visit [techniseal.com](http://techniseal.com) and fill-in the form in the "Support" section.



ENJOY YOUR INSTALLATION FOR YEARS TO COME

