



# NextGel™ PORCELAIN PAVER JOINTING SAND

**A FASTER & CLEANER SOLUTION  
FOR GROUTING PORCELAIN PAVERS**



• **INNOVATIVE  
GROUT ALTERNATIVE**

• **NO MIXING  
REQUIRED**

• **FAST & EASY**

• **COLOR  
CONSISTENT  
EFFLORESCENCE-FREE**



**Residential &  
Commercial Use**

**Convenient 25 lb bag  
covers 100 sq. ft.**

**For joints from  
1/16" to 1/2"**

# NextGel™ PORCELAIN PAVER JOINTING SAND



## 1 SPREAD THE SAND

- Spread product evenly on a small surface. Using the street broom, fill joints completely. Spread sand over short distances.



## 2 COMPACT THE SAND

- Pass the paver roller compactor over the entire surface to compact the sand.
- Add more product and spread to fill joints again.
- Pass the paver roller compactor over the entire surface a second time.
- **IMPORTANT:** Multiple passes may be required until joint saturation is reached.
- Remove excess sand from the surface with the broom.
- Level the height of the sand with the leaf blower.
- Sand level must be at least 1/8" below top of tiles.



## 3 ACTIVATE BY WATERING

- Using the water sprayer, starting from bottom of the slope, quickly water the joints of a 100 sq. ft. section\* to set the sand (10 to 15 seconds).
- Immediately wet the same section where joints have absorbed more water.
- Check for water accumulation at the surface of the jointing sand as a cue to stop watering. Wait until there is no free water at the surface of the joint and verify the depth of activation.



### NECESSARY TOOLS

- Street broom with semi-rigid bristles.
- Paver roller compactor.
- Hand tamper may be needed in restricted areas where using heavier equipment may not be possible.
- Leaf blower.
- Handheld or backpack sprayer for precise watering of the joints.

ULTRA-CLEAN

HAZE & DUST FREE

TECHNOLOGY



CONTROLLED TESTING IN TECHNISEAL R&D LAB

Techniseal  
**NextGel** PORCELAIN  
PAVER JOINTING SAND

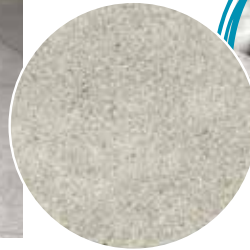
COMPETITOR  
JOINTING SAND

If NextGel™ PORCELAIN PAVAR JOINTING SAND is activated at 75% or more of its depth stop watering. If activated at less than 75%, water for an additional 5 seconds and check again after 30 seconds.

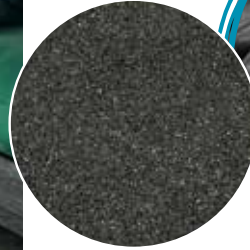
\*NextGel™ PORCELAIN PAVAR JOINTING SAND is fast to activate. It is very easy to overwater installations with large tiles. Carefully track the watering time during the activation process.



**AVAILABLE IN:**



**White Pearl**



**Black Onyx**



**Grey Moonstone**



**Beige Agate**

A high-angle photograph of a modern outdoor patio. The patio is paved with large, rectangular, light-colored stone tiles with a textured, natural stone appearance. A curved, white concrete pool edge is visible in the foreground, curving from the right towards the center. In the background, there is a dark, textured outdoor sofa with light-colored cushions. The lighting is warm, suggesting a sunset or sunrise, with long shadows cast across the tiles.

**SPECIFICALLY  
DESIGNED** for your  
**PORCELAIN PROJECTS**  
with **Ultra-Clean Technology**



 **Techniseal**

**NextGel** PORCELAIN  
PAVER JOINTING SAND

**ULTRA-CLEAN**  
HAZE & DUST FREE  
TECHNOLOGY

Residential &  
Commercial Use

- Innovative great alternative
- Color consistent - Effluorescence-free
- No mixing required, fast and easy

FOR JOINTS FROM 1/16" TO 1/2"

NextGel

NET  
WEIGHT  
25 LB



# Techniseal®

## A FASTER & CLEANER WAY WITH TECHNISEAL'S SYSTEM FOR PORCELAIN PAVERS



### NextGel® PORCELAIN PAVER JOINTING SAND

COLOR	CODE	WEIGHT
White Pearl	141000066	25 lbs
Black Onyx	141000065	25 lbs
Grey Moonstone	141000064	25 lbs
Beige Agate	141000067	25 lbs

#### CAUTIONS SPECIFIC TO PORCELAIN PAVERS

- Mechanical compaction should be done until joint is saturated. Several passes may be required.
- Porcelain pavers should never be installed with a porcelain to porcelain contact.

(341-444 09/2023)

Contact your local Techniseal® representative, visit [techniseal.com](http://techniseal.com) or dial 1 800 465-7325 for more details.

